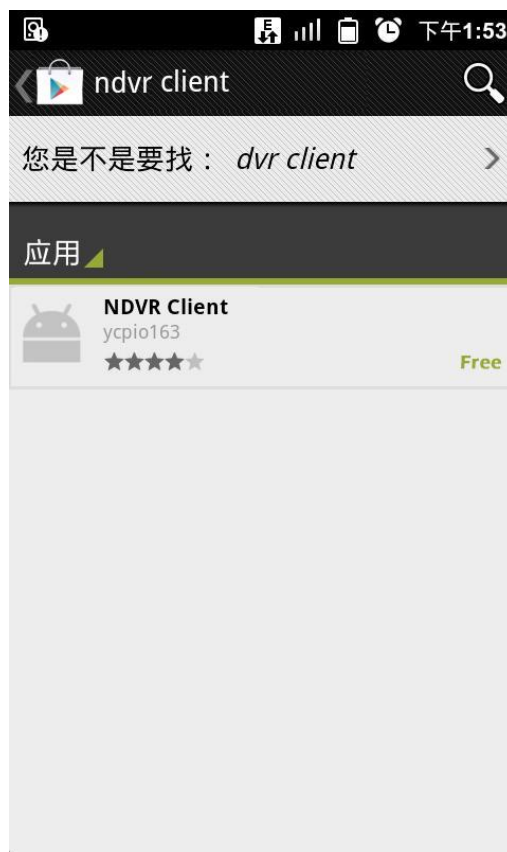


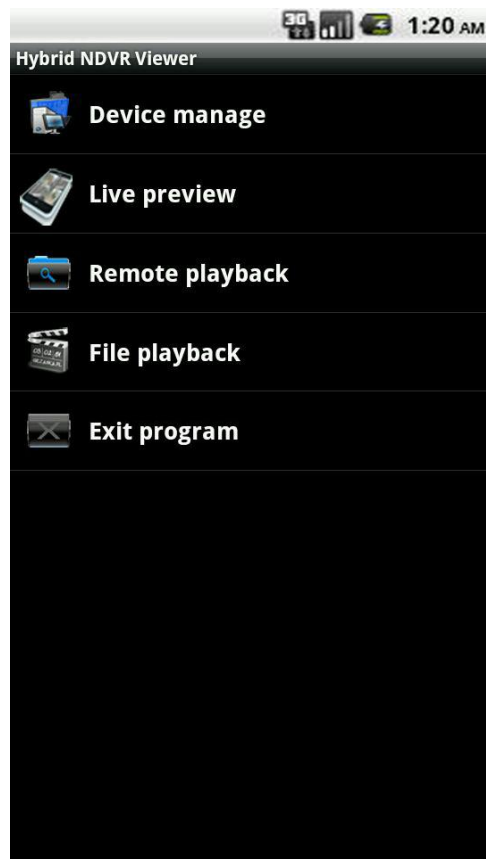
NDVR Client User Guide for Android

1. Install

Open your browser of your Android Phone, enter Android Market, Search for “NDVR Client”, you will get the following result if the program matches your phone:

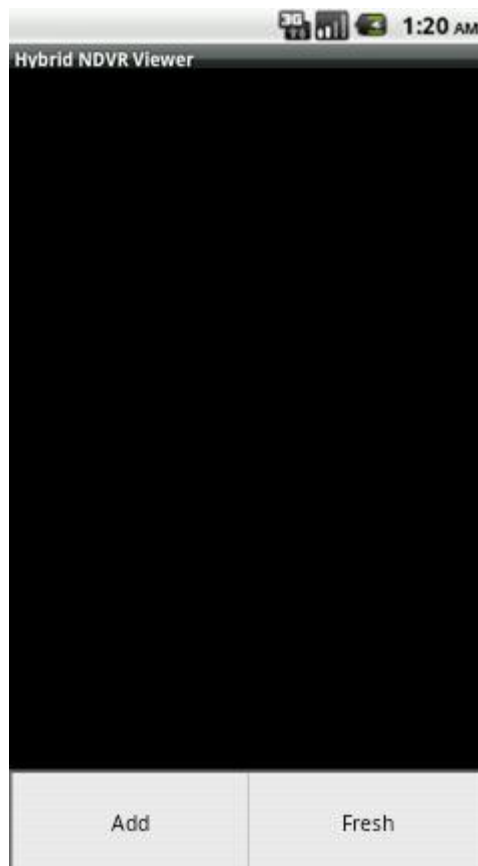


Download and install the program, run it, you will see the main interface below:



2. Device Manage

Click “Device Manage” in main interface, you will enter Device Manage interface, it is a black screen by default since there is no device added.



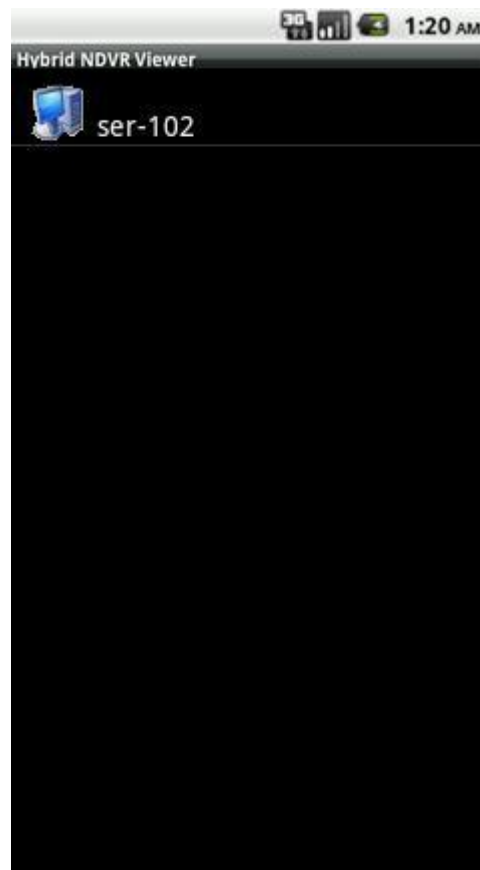
Here click “MENU” button on your phone and press “add” button to start adding device, the interface is as below:

The screenshot shows a mobile application interface titled "Hybrid NDVR Viewer". At the top, there is a status bar with icons for 3G, signal strength, battery, and the time "1:20 AM". Below the title bar, there is a dark grey rectangular box with rounded corners titled "Add device". Inside this box, there are several input fields: a "Type" dropdown menu currently set to "Hybrid NDVR", a "Name" text input field, an "IP" text input field, a "Port" text input field containing the value "5100", a "User" text input field, and a "Pass" text input field. At the bottom of the "Add device" box is a circular button with the text "Add".

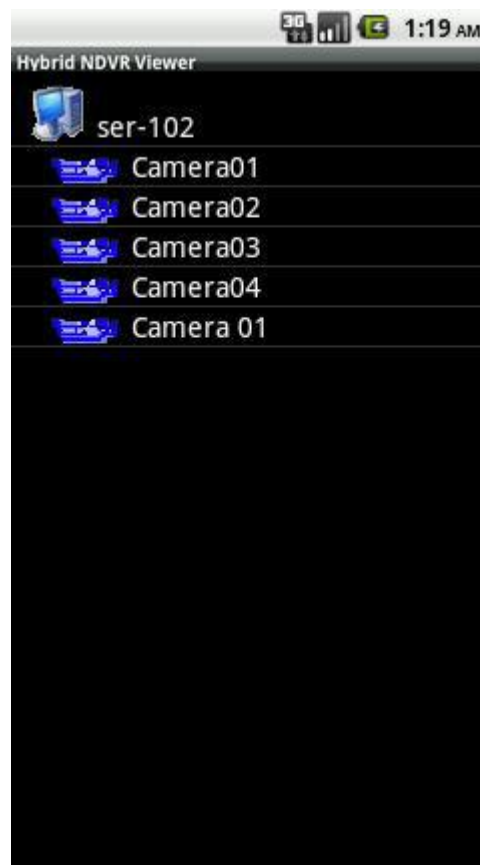
Here you have to enter the Device Name, IP address, Port(Please note that new program use the Data Port **5100** to connect), User name and Password, then click "add" button to finish adding.

Note:

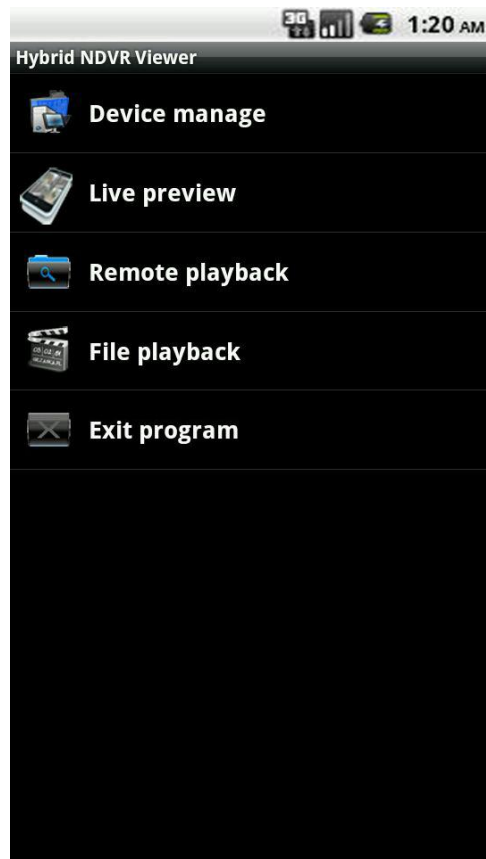
Now you can add DH series devices got from us (with our serial numbers) directly. Click the arrow beside "Hybrid NDVR" and select the type "Embedded DVR/IPC".



Click the server to show the cameras in it.



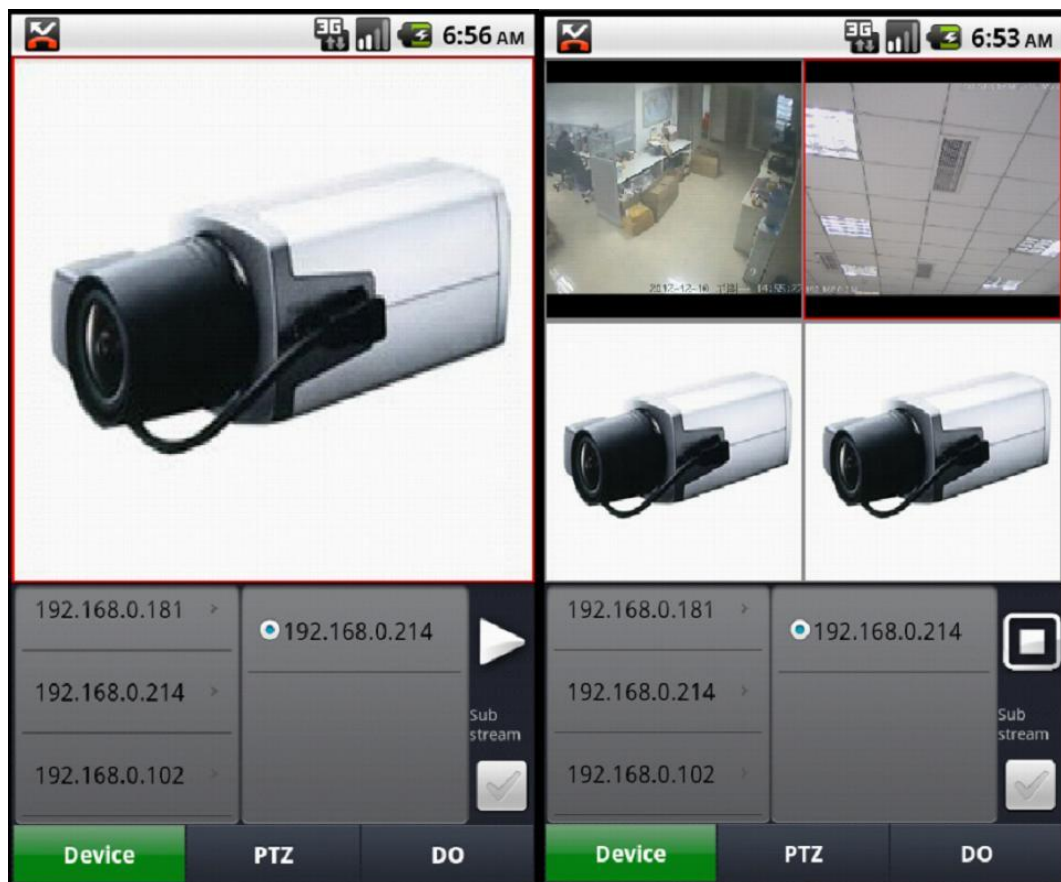
When you finished adding device, return to the main interface to do other operation.



3. Live View Option

3.1 live view

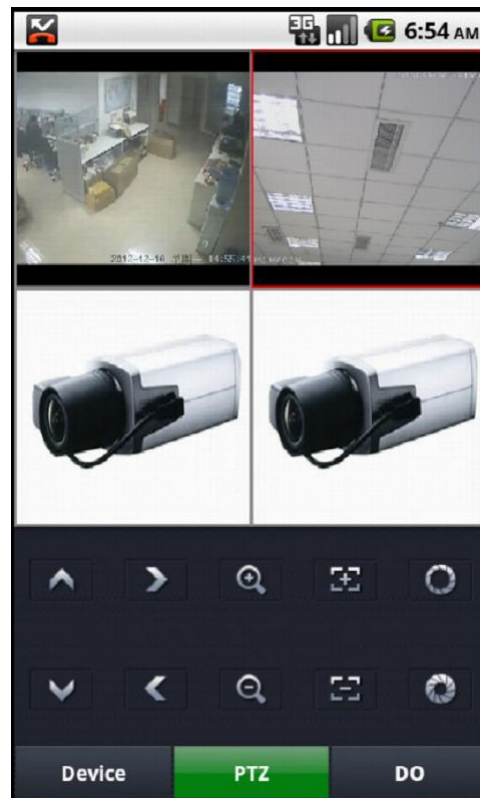
Select "Live Preview" in main interface, you will enter the following interface.





Select a window here, then select a server in the device list on the left side, then select a camera on the right side, click "▶" button to play live stream of that camera.



3.2 PTZ Control



Hit the “PTZ” Option to switch to PTZ control interface:



   : PTZ Direction Control

 : Zoom in/out

 : Focus adjust

 : Iris adjust

3.3 Do Control

Select “DO” option control the DO of the connected devices, seen as below:



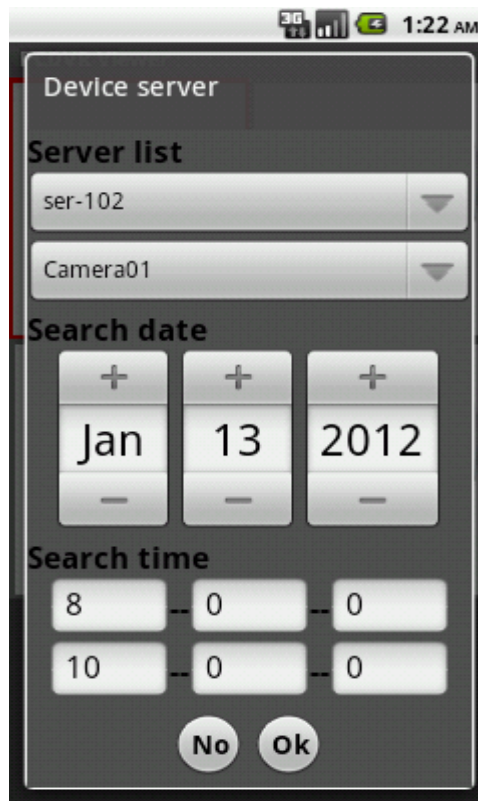
The boxes with “on” and “off” on the right side shows the status of the current DO port.
Hit the “Off” button on the right of the DO port, it will switch to “On”, and the DO of the device will also be switched to “On” status to output an alarm signal.

3. Remote Playback

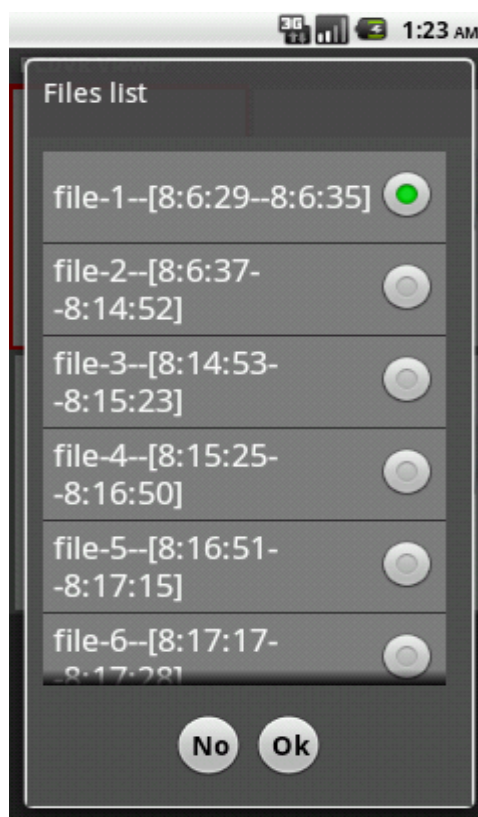
Return to the main interface and select “Remote Playback”, you will enter the following interface:



Select a window and click "play" button, you will see the following interface:



Here you have to select Server/Camera/Date/Time and click "ok" button, then matched files will be list as below:



Click on a file here, the file will be played in the window you selected in main interface.

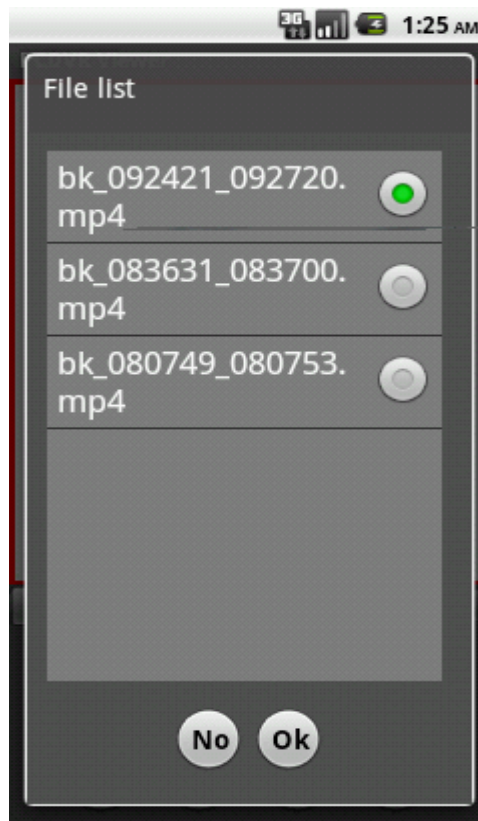


4. File Playback

Select "File Playback" in main interface to play local backed up files, showed as below:



Click "open" button, the files backed up while remote playback will be listed as below:



Select a file and click “ok” button to play it.

